

HDP19-16/17

FRONT CAMBER ARM SPHERICAL BEARING KIT

A set of spherical bearing inner mounts for the front upper control arms of Honda ED/EG Civic & DC2 Integra vehicles

DISCLAIMER

Honed Development Pty Ltd holds no responsibility for any damage that occurs as a result of installation of these components.

These parts are intended to be installed on off-road vehicle only.

Please read through these instructions fully before attempting to install.



STEPS

- 1.** With vehicle on axle stands, remove the front upper control arms.
- 2.** Remove the old inner bearing/bushing parts. Retain the bolts that attached the control arm to the bushes.
- 3.** Unpack the Honed Camber Arm Spherical Bearing Kit.
- 4.** Assemble the bearing spacers on each side of the bearing housings.
- 5.** Mount the spherical bearing assemblies to the camber arm, re-using the original hardware. Orientate the etching in the direction that would be facing the centreline of the vehicle.
- 6.** Tighten bolts going through the bearings to 27 N.m (19 lbf-ft).
- 7.** Offer the assembly of arm and bearings into the chassis, align the studs through the strut top and apply the m12 flange nuts by hand.
- 8.** Using the supplied tool to hold the bearing housing so that it's centred in the control arm, tighten the M12 nut to 64 N.m (47 lbf-ft). Refer figure 1.
- 9.** Reassemble control arm to knuckle.

Continue to following pages for reference figures and appendix



REFERENCE FIGURES

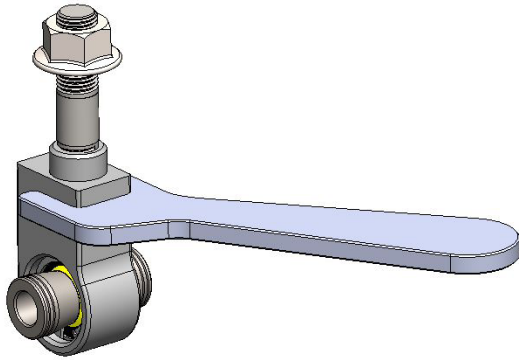


Figure 01

Figure 02

Figure 03

Figure 04

Figure 05

Figure 06



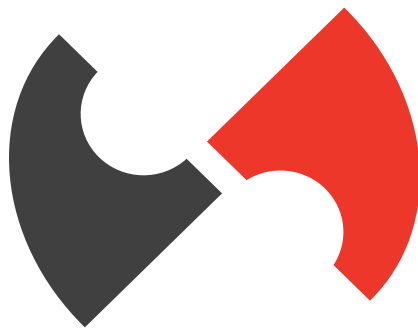
HDP 19-16/17

APPENDIX

- NA

COMPATIBLE PRODUCTS

- HPD19-10 EG FRONT ADJUSTABLE CONTROL ARM



You're at the end! Thanks for trusting us!

If you have any questions please get in touch via e-mail
sales@honeddevelopments.com

We'd love to see your project. Tag us on instagram
[@honed_developments](https://www.instagram.com/honed_developments)