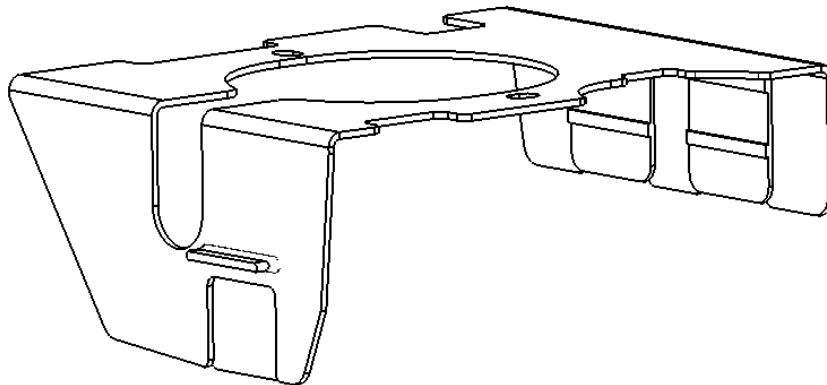


<b>No.</b>	<b>Description</b>	<b>Quantity</b>
1	Baffle Plate	1
2	Baffle Rubber Flaps	3

# Installation Guide

1. Organise the following
  - a. Gasket sealant Honda Bond or Permatex Grey
  - b. Engine Oil and Filter
  - c. Honda Part numbers:
    - i. 11252 PWA 000 PKG, OIL PAN
    - ii. 11203 PWA 003 O-RING 17.8x2.4
2. Remove the Sump
  - a. Drain oil
  - b. Remove splash shield
  - c. Take the accessory belt off
  - d. Remove fasteners holding AC unit to the sump
  - e. Remove axle heat shield
  - f. Remove the dipstick and dipstick tube
  - g. Remove the crank position sensor
  - h. Remove the flywheel cover plate
  - i. Remove all the bolts connecting the sump to the gearbox
  - j. Disconnect the rear lower engine mount from the gearbox and push up out of the way
  - k. Remove fasteners holding sump to the engine block, taking note of their location
3. Install the rubber baffle flaps into the baffle plate. Flaps should be orientated as shown below, toward the inside of the baffle plate

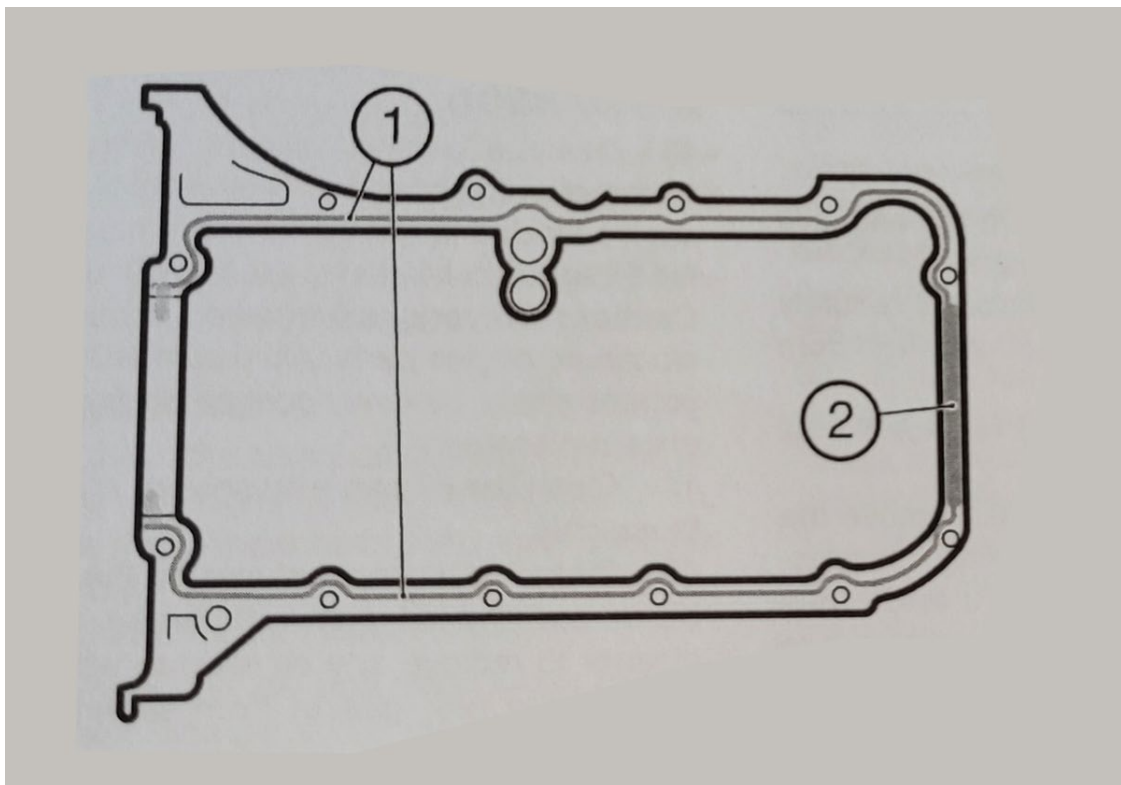


4. Clean old sealant off the bottom of the block

5. Remove the two m6 fasteners supporting the oil pick up tube and bolt the sump baffle in place (by refitting the same fasteners again)



6. Clean sealant off the mating face of the sump
7. Install new oil filter supply o-ring (in sump)
8. Install new U-shaped gasket into the sump
9. Apply new sealant to the sump in the areas indicated below:



10. Re-install the sump and all the associated parts.