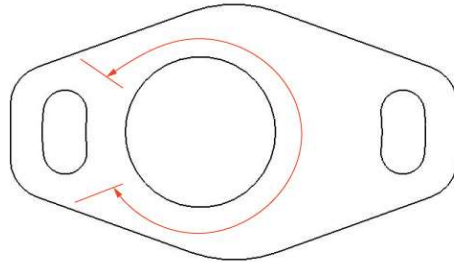


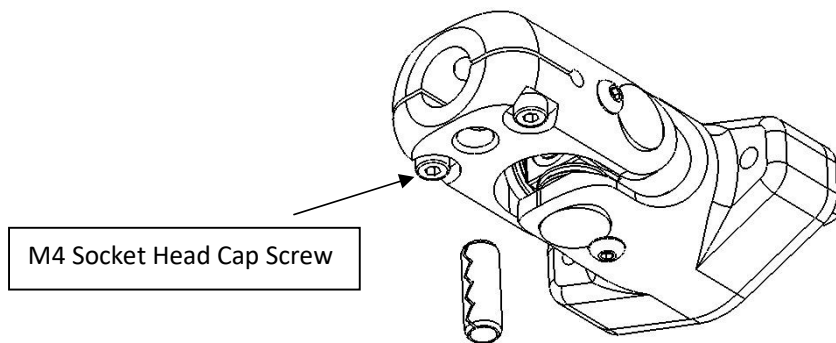


No.	Description	Quantity
1	Gear Linkage Assembly	1
2	M8 Roll Pin	1
3	Gear Linkage Mounting Plate	1
4	M6x16 Flange Head Hex Screw	2

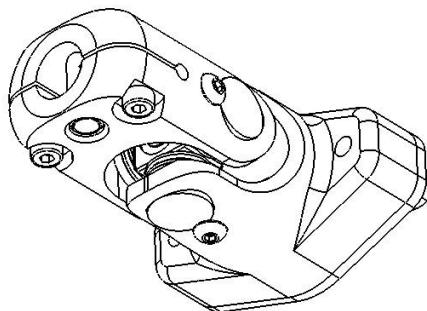
1. Remove the gear linkage (universal link) from your car
2. Punch out the original 8mm roll pin and if it's in good condition, reuse it with the Honed gear linkage.
3. Cut the original universal joint off the OE gear linkage rod, figure 1 shows the cut position.
4. Prepare the end of the linkage rod for welding, remove paint back 50mm (2") from the cut end
5. Orientate and mark the gear linkage mounting plate, refer to figures 2, 3 and 4 for alignment guidance.
6. Weld the gear linkage mounting plate to the gear linkage rod.
7. If tig welding, minimise the size of the weld fillet between the arrows. If mig welding, don't weld in this area.



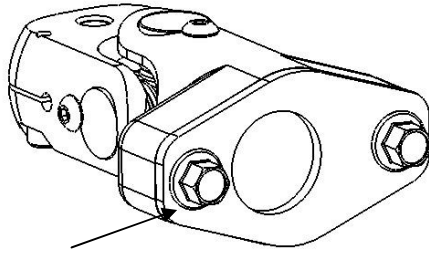
8. Grind any excess tube flush
9. Flatten the mounting plate if distorted by welding
10. Paint the end of the gear linkage rod
11. Once dry, mount the gear linkage to the modified gear linkage rod. The honed logo should be facing the ground.
12. If you have blue low strength loctite or similar, apply this to the two m4 socket head screws
13. Re-install the linkage in your car, ensure the m4 socket head cap screws are not tight
14. Re-install or install roll pin



15. It's best to have a punch or drift tool that locates inside the roll pin to prevent hammering the gear linkage.
16. Once the roll pin is flush with the bottom of the gear linkage, the m4 socket head cap screws can be tightened. These should be hand tight only, avoid over tightening.



17. If the gear stick is on an angle, this can be adjusted at the gear linkage to gear linkage mounting plate connection.
18. Torque gear linkage mounting screws



Torque Setting: 9 N-m

Reference Images

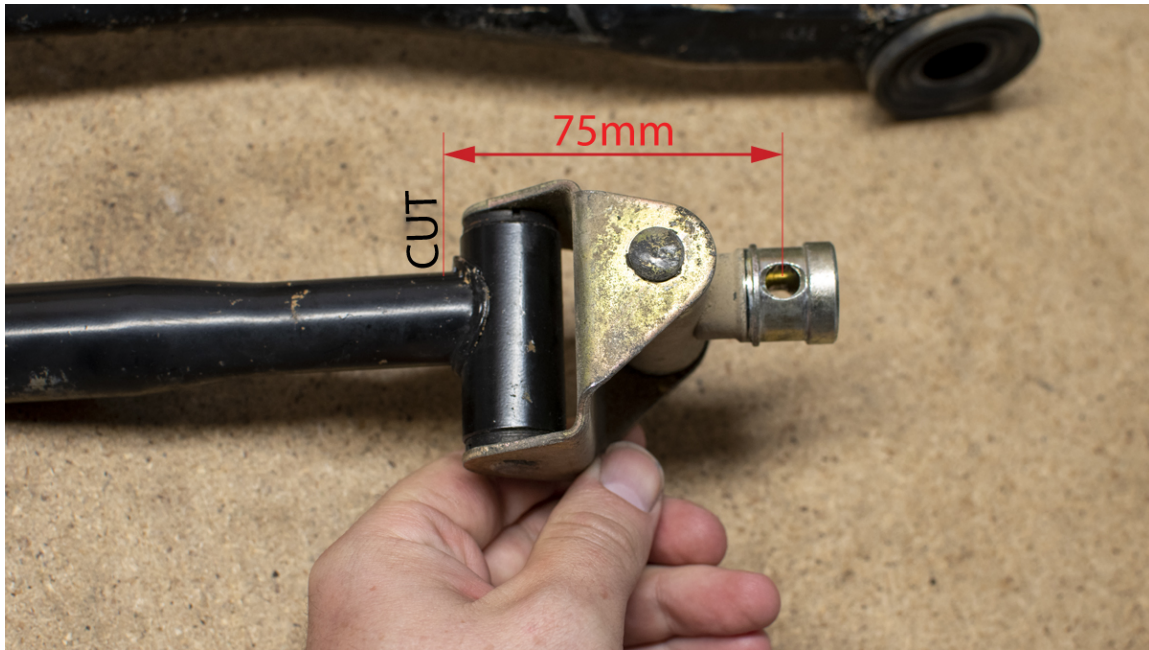


Figure 1: Cut position



Figure 2: Square up the back of the linkage



Figure 3: Align and mark the mounting plate

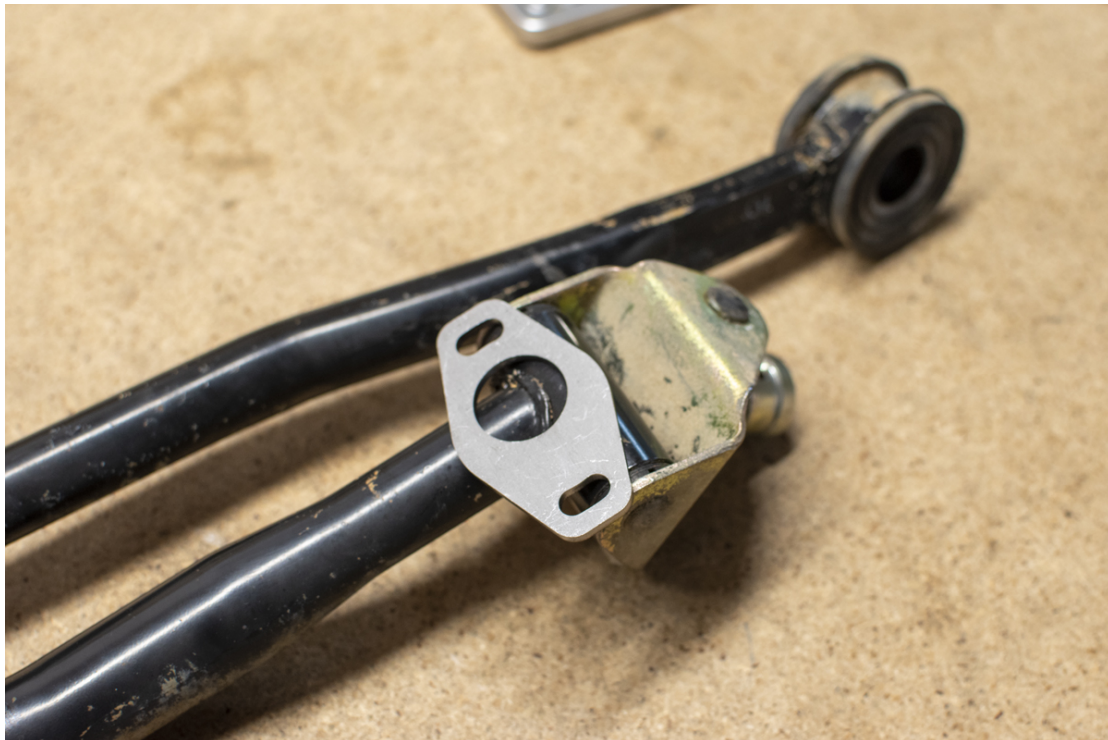


Figure 4: Orientation of the gear linkage mounting plate



Figure 5: Completed Assembly