

K20 Engine Bracket Installation Notes

Engine Block used for bracket images K20z1.

Passenger Side Mount

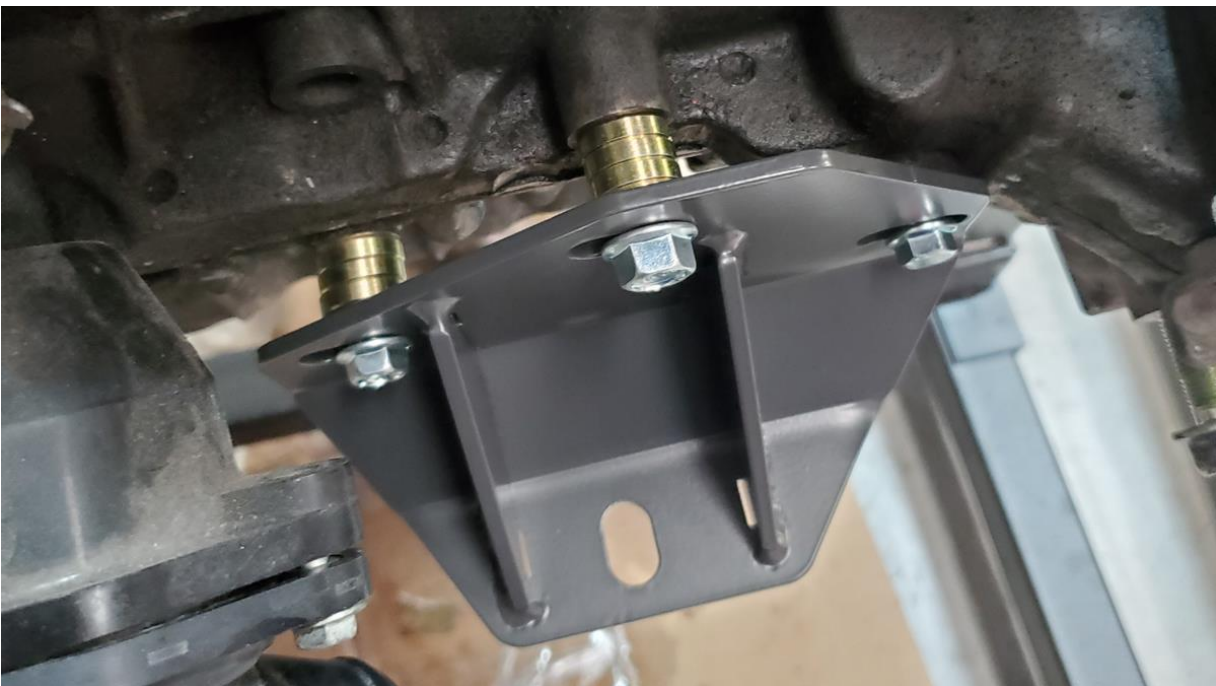
Final torque spec for the two m8 bolts: 22 N.m (16 lb.ft)

Final torque spec for the one m10 bolt: 45 N.m (33 lb.ft)

Note the location of the large washer

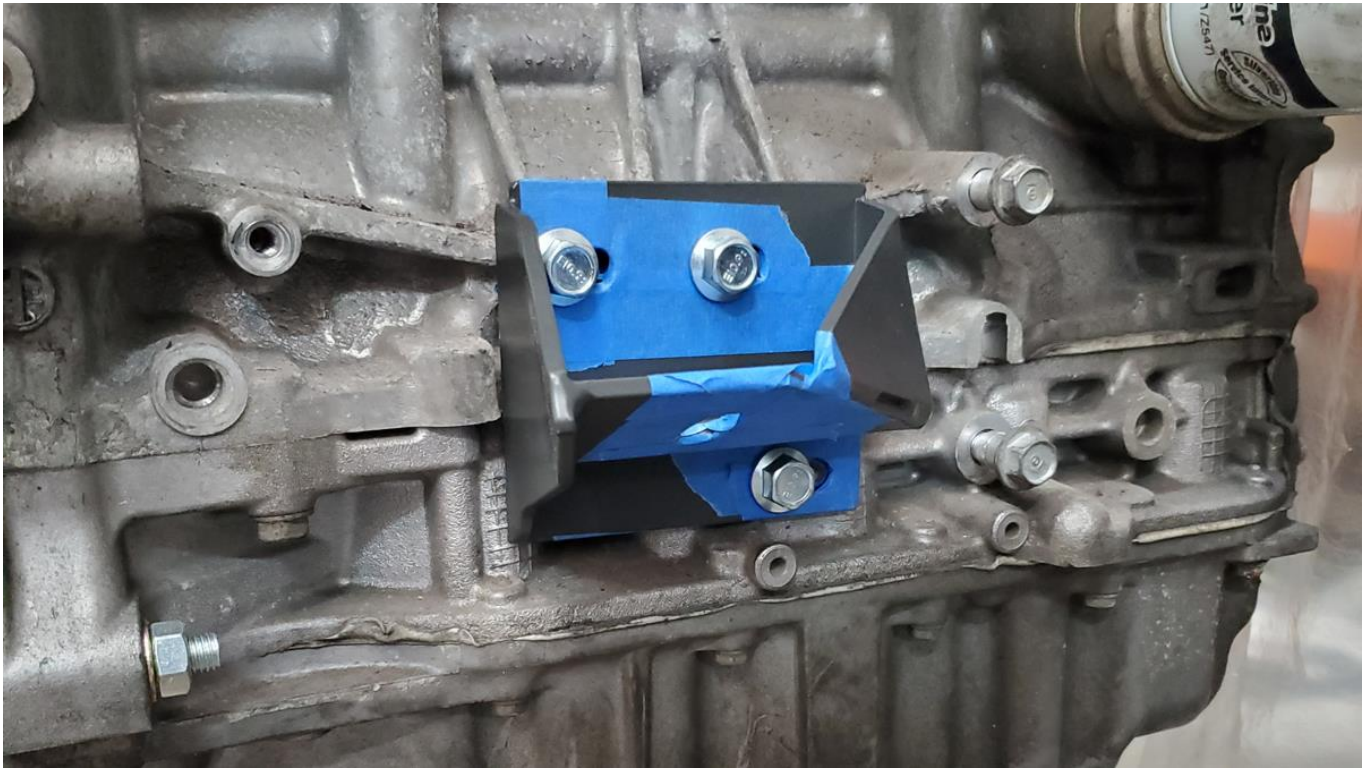


Note the location of the supplied spacers, there are four spacers used in each location shown below



Drivers Side Mount

Final torque spec for the three m10 bolts: 45 N.m (33 lb.ft)



Note

To improve the range of adjustment of the driver's side engine bracket, we recommend removing material from the engine block in the location shown below. 3-5mm removed would offer a good benefit in engine angle adjustment.

