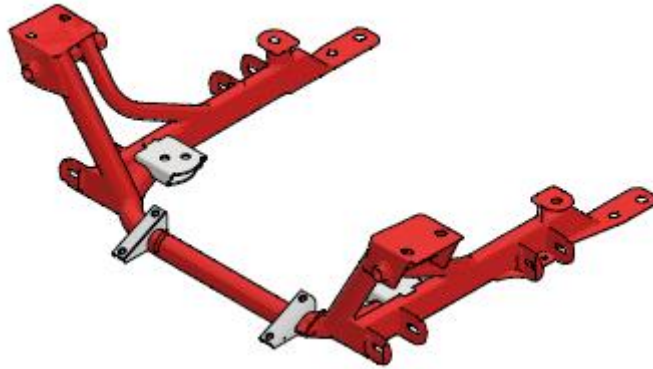
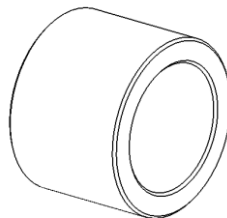


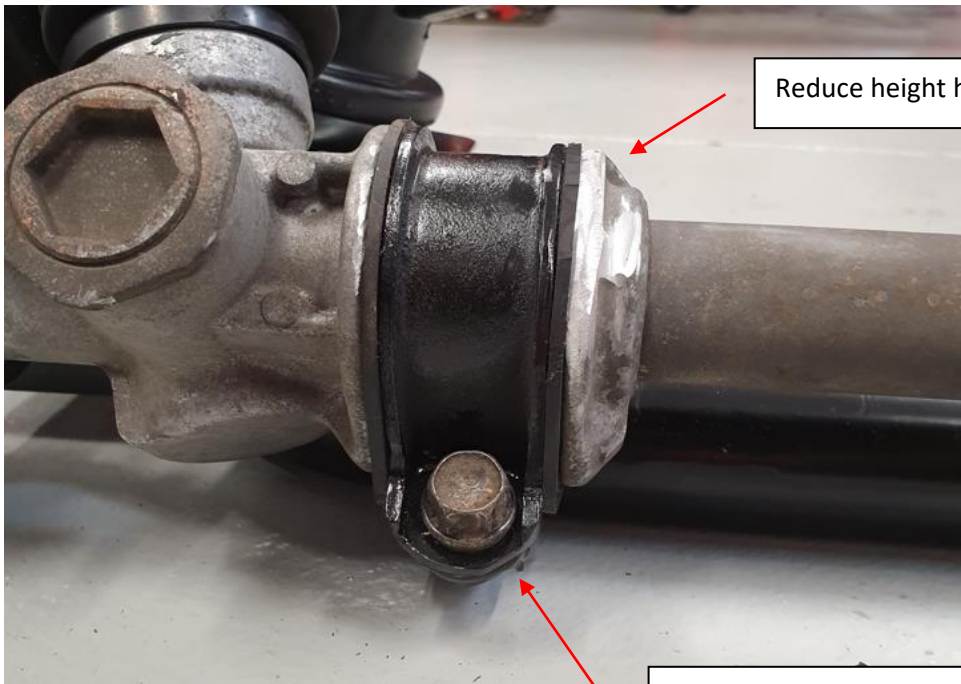
Installation Notes Related to the RHD MX-5 K-Series Subframe



1. The tubular subframe is intended to reuse OEM Mazda mounting hardware
2. The Honed RHD subframe is designed to use a manual NA MX-5 steering rack
3. Supplied with the subframe is a steering lock-reducing spacer that is intended to be fitted on the steering rack shaft on the passenger side (LHS). The inner tie rod end must be removed for this to be done. The purpose of this spacer is to give an even amount of steering lock in both directions.



4. To improve clearance to the engine and sump, some material needs to be removed from the steering rack drivers side pinion housing and from the saddle clamps.



Reduce height here

Round off the corners of the saddle clamp, both sides of each clamp