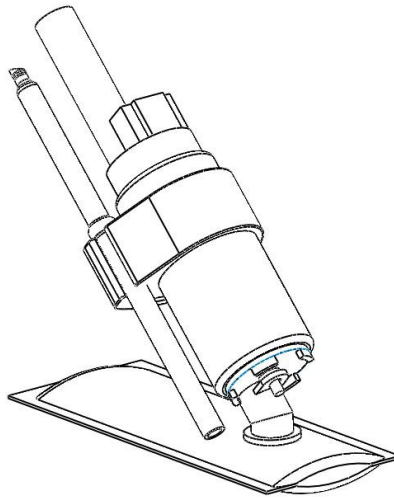
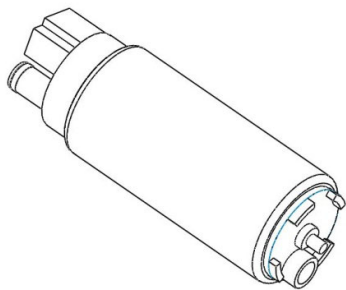




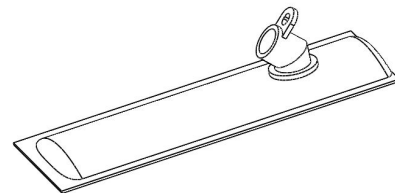
## HDP34-04 Fuel Pump Honed Anti-Surge Mounting Kit Instructions



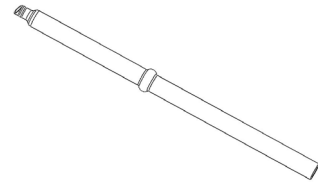
No.	Description	Quantity
1	Fuel Pump	1
2	Pick Up Filter	1
3	Return Extension Hose	1
4	Pump Clip	1
5	In-tank fuel hose section 60mm long	1



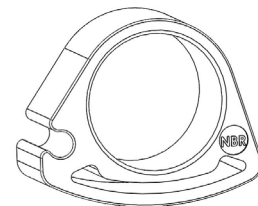
1



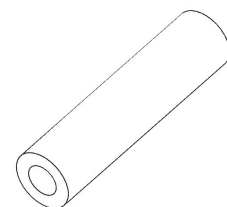
2



3



4

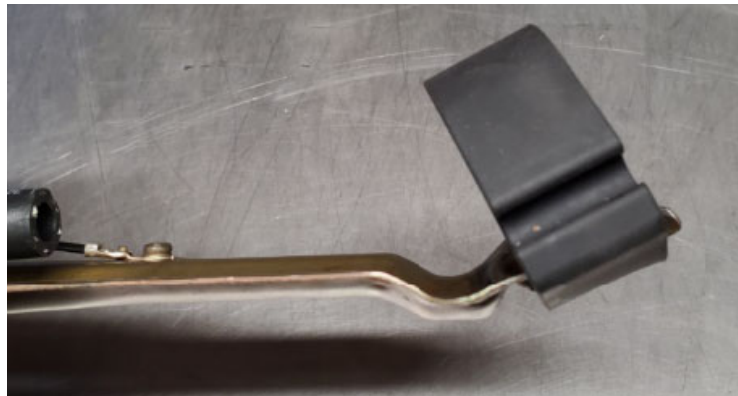


5

1. Remove the fuel hanger from the vehicle.
2. Remove the original fuel pump and pick up filter from the hanger, retain the hose clamps
3. Install the supplied section of fuel hose (item 5). Slide the original hose clamp into position on the hanger side and secure, position the second clamp in the middle of the hose temporarily.
4. Using a tool (pliers or shifter) gently bend down the end of the hanger to the position shown below (approximately).



5. Remove the OEM rubber fuel pump isolator from the hanger. This can just be pulled out.
6. Slide the Pump Clip (item 4) onto the hanger. Orientate the hose clip to the same side as the return outlet.



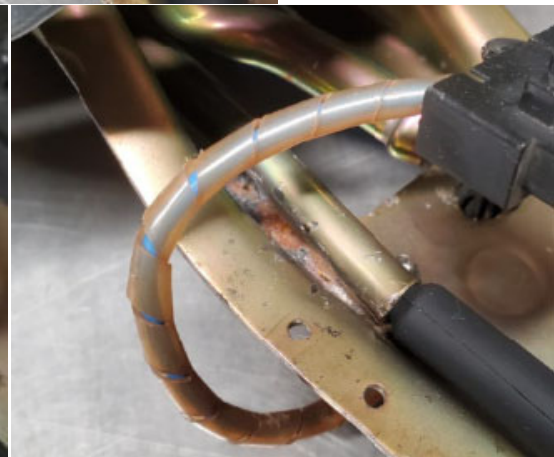
7. Unpack the Fuel Pump (item 1) and Pick Up Filter (item 2). Mount the Pick Up filter to the Pump's outlet. These can be a snug fit, be sure to fit the retaining clip (not pictured) once the Pick Up is fully seated.



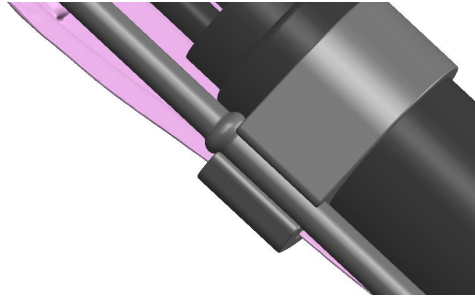
- Slide the Fuel Pump through the Pump Clip and engage it into the section of fuel hose. Continue to push the fuel pump into the hose until fully seated. Move the second hose clamp into position, sealing the hose to the fuel pump.



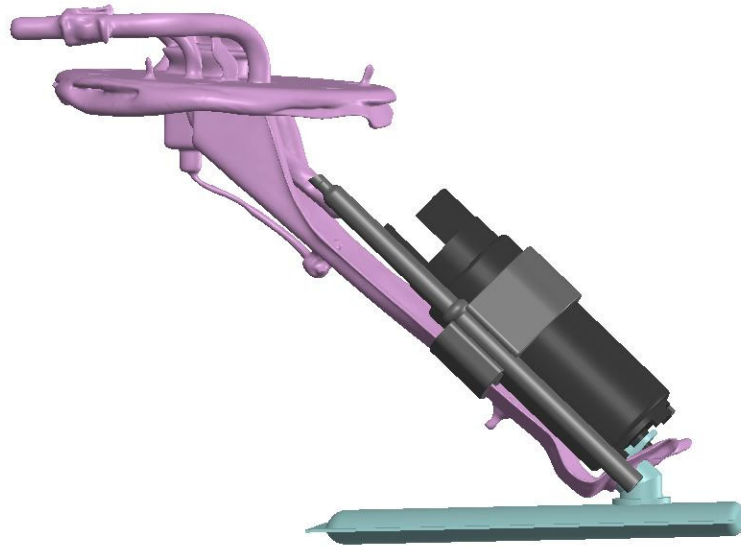
- Plug in the Fuel Pump's electrical connection.
- Install the Return Extension Hose (item 3) as shown below



11. Clip the Return Extension Hose into the Pump Clip. The intention is for the rib on the Return Extension Hose to be close to the side of the Pump Clip.



12. Adjust the position of the Pump Clip as indicated below:



13. Bend the bottom of the hanger back to it's original shape.
14. Re-install into the vehicle.

