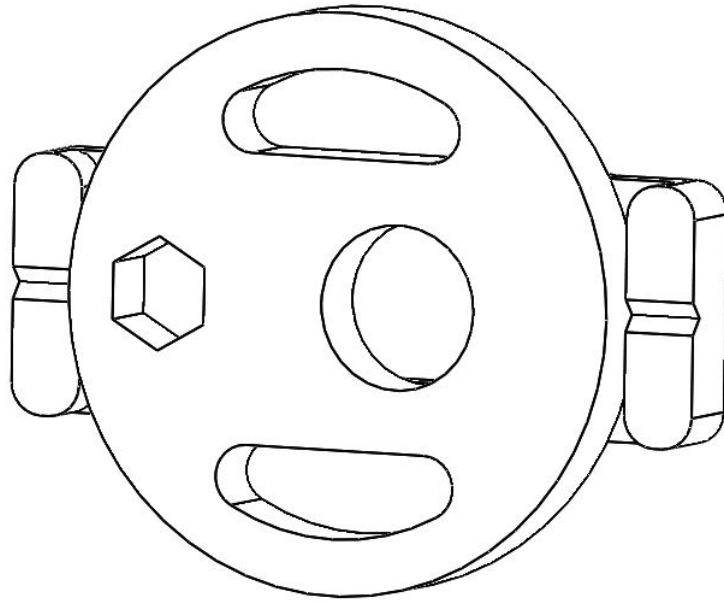
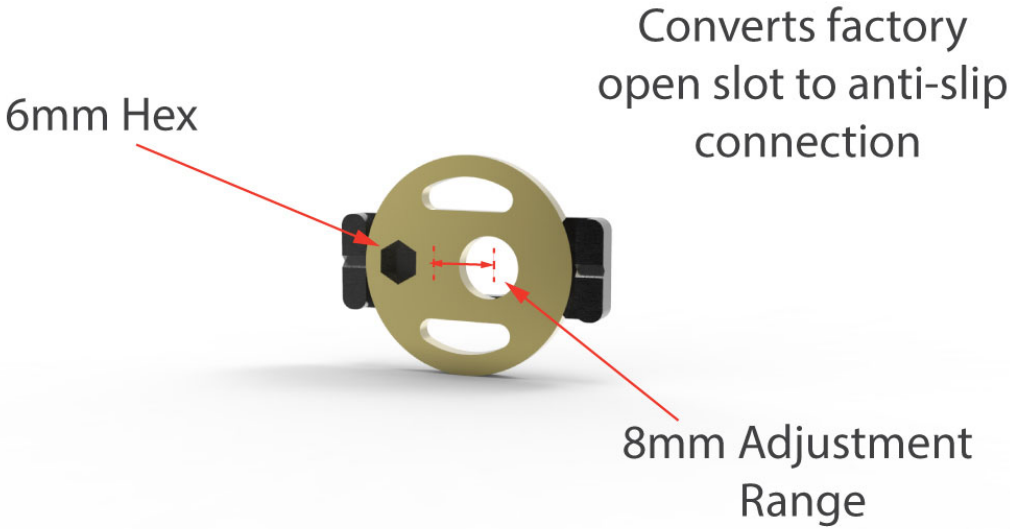
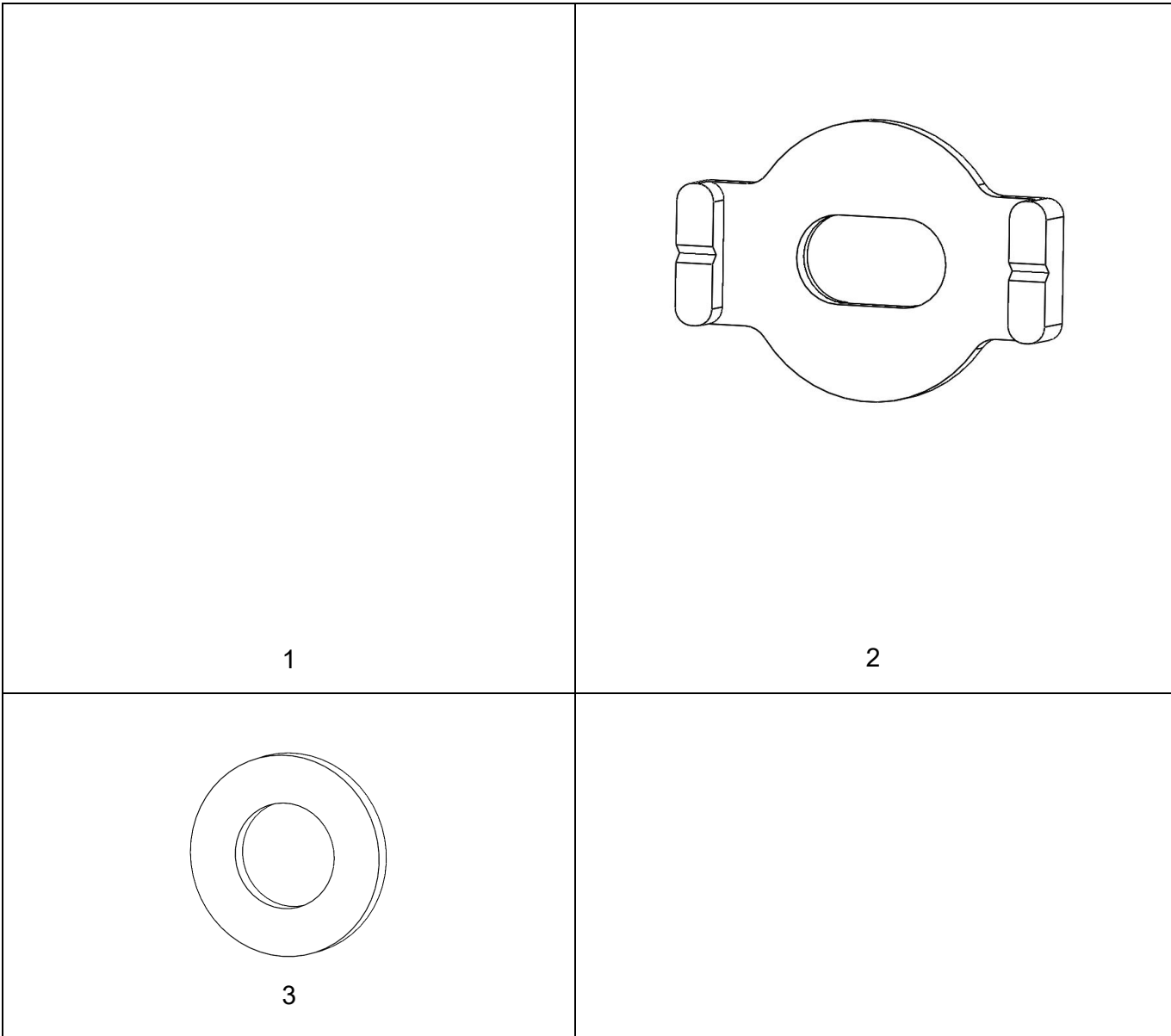




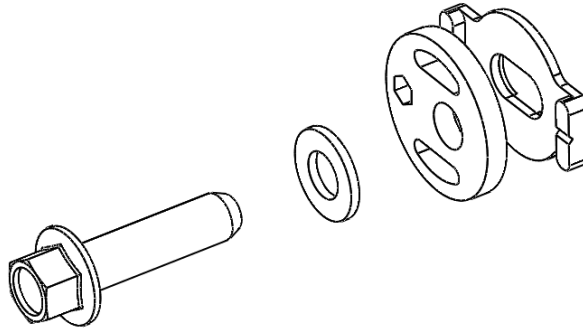
**Toe Arm Eccentric Kit
Civic, CR-X and Integra –
HDP12-04**



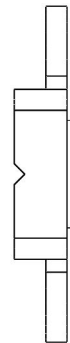
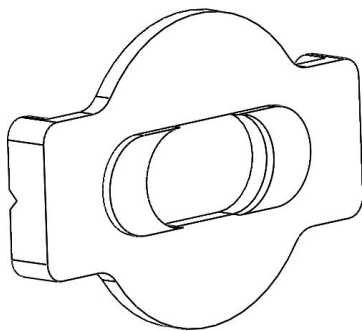
No.	Description	Quantity
1	Eccentric Washer	2
2	Eccentric Housing	2
3	M10 Washer	2



1. Raise the rear of the vehicle, and support on jack stands.
2. Remove the chassis side Toe Arm bolt
3. Assembly the Eccentric Kit on to the factory bolt



4. Tighten the bolt until eccentric housing is engaged into the body securely but washer can still be rotated



It's important to ensure this small feature is engaged in the body slot

5. The Eccentric washer should be rotated with a 6mm hex key
6. Once your desired alignment settings have been achieved, torque the chassis side toe arm bolt to 64 N.m (47ft.lbs)

Note 1: This product can be used with any brand of rear toe arm.

Note 2: This product has a smaller total adjustment range compared to the original slot, it is possible that for some combinations of trailing arm (bent) and ride height your desired toe setting cannot be achieved.

Note 3: These components are intended for race use only, and will require regular inspection and maintenance. Honed will not be held responsible for any misuse of the components.

Honed Alignment Recommendations

Here are our alignment recommendations to help you hit the track with a great starting point

After getting your car aligned, keep the alignment sheet for your records
if you don't get a print out then fill in the "Final Values" column

	Honed Recommendation	Final Values
Front Axle		
Individual Toe	0mm	
Camber	-2.5 degrees	
Castor	+1 to +4 degrees	
Rear Axle		
Individual Toe	+1.5mm (toe in)	
Camber	-2 degrees	

The alignment settings above are to suit Honda Civic and Integra vehicles from 88'-01' and are intended as a starting point only.
Front castor is listed as a range, if you have components that increase castor consider that this can have a detrimental effect on bumpsteer and adjustable outer tie rods can be beneficial.