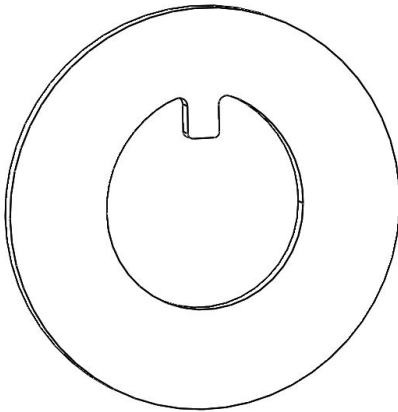
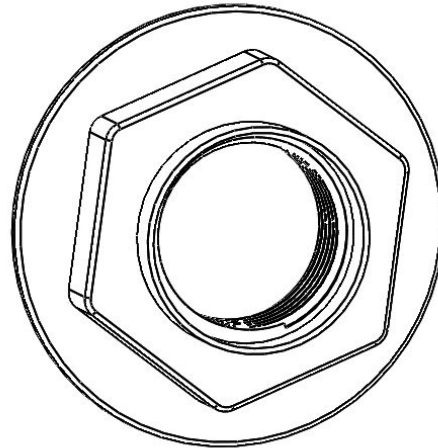


No.	Description	Quantity
1	HDP35-01-01 Lock Washer	2
2	HDP35-01-02 Nut	2

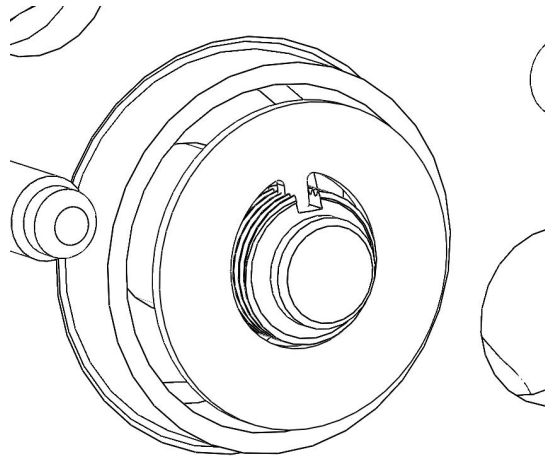


1

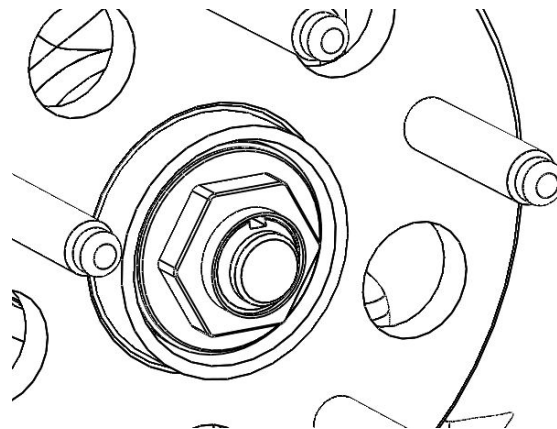


2

- These instructions assume the customer has sourced the appropriate Rear Wheel Bearing with 5x114.3 wheel stud pattern.
    - Equivalent part numbers for this Wheel Hub
      - FAG:RW8255
      - SKF:BR930620
      - 4220-ST7-R510
      - HONDA:42200-ST7-R51
      - HONDA:42200-S03-C51
  - The rear hub spindle nuts require a 32mm socket. It is a good idea to have a long breaker bar on hand to loosen the original nut and a torque wrench capable of 181 N.m or 134 lbf.ft
1. Loosen rear wheel nuts slightly
  2. Raise vehicle and support it with safety stands in the proper locations
  3. Remove the rear wheel nuts and rear wheel
  4. Engage the parking brake
  5. Remove the wheel hub centre cap
  6. Raise the locking tab on the spindle nut and the remove the nut.
  7. Release the parking brake
  8. Remove brake calliper and disc
  9. Remove original hub
  10. Wash the trailing arm spindle with evaporating solvent, ensure it is clean
  11. Install the new 5 stud hub unit
  12. Install the provided lock washer



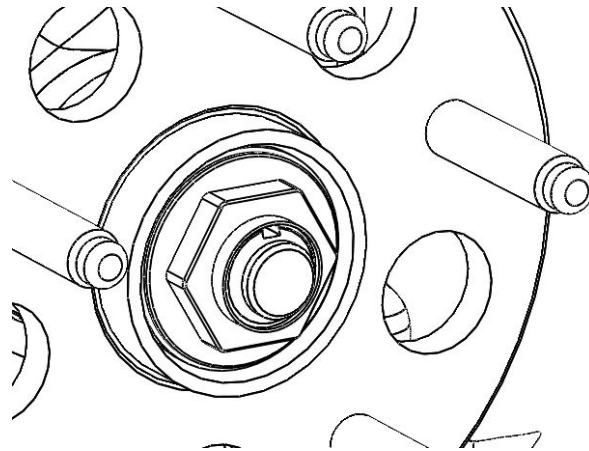
13. Install the provided nut



Torque hub nut  
to 181 N.m (134  
lbf.ft)

14. Use a punch to deform the thin flange of the nut into the recess of the spindle

Stake Nut to  
Spindle



15. Refit rear hub cap.
16. Reassemble rear brake components
17. Refit rear wheels
18. Lower vehicle off stands
19. Torque rear wheel nuts.

**Note:**

- The supplied Honed lock washers should not be re-used.
- It is advisable to check the torque setting of the rear hub nut on a periodic basis.