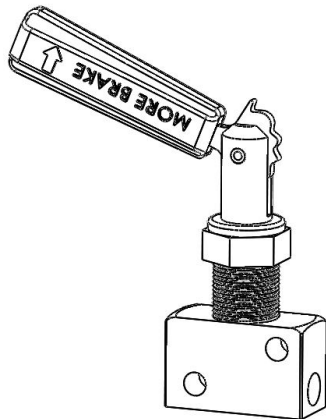
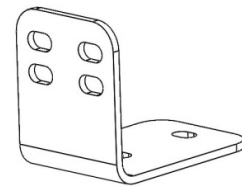


No.	Description	Quantity
1	Tilton Propvalve Assembly PN 90-1003	1
2	HDP33-01-04 REV B PROP VALVE BRACKET	1
3	M6 Socket Head Cap Screw	2
4	M6 Flat Washer	4
5	M6 Nyloc Nut	2
6	M6 Flange Head Bolt	2
7	M6 Nutsert	2



1



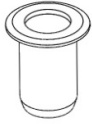
2



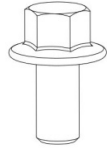
3



4



7



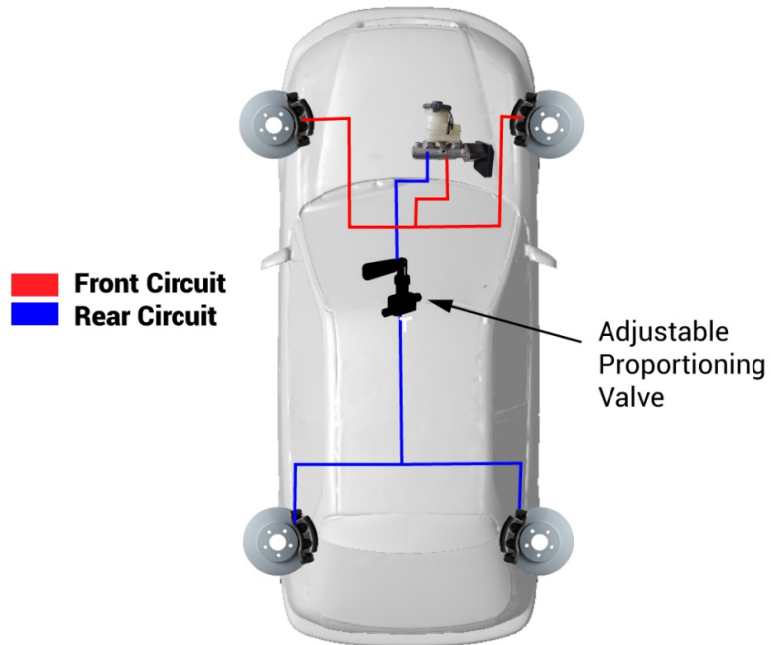
6



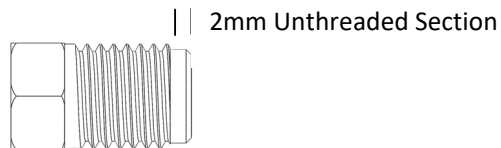
5

1. The Adjustable Proportioning Valve is intended to be installed in a vehicle with front- to-rear brake line circuits (this is not the OE set up in many vehicles).

Motorsport Set up



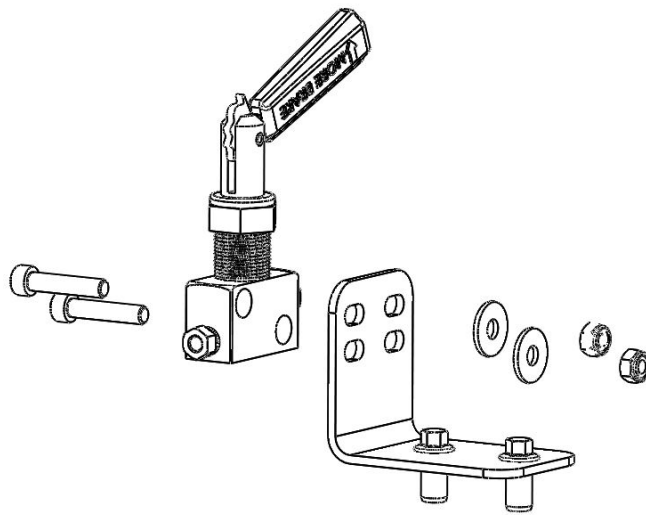
2. The tee fittings required for the Tilton prop valve need to have a 2mm unthreaded section at the end of the fitting. M10x1.0 thread pitch.



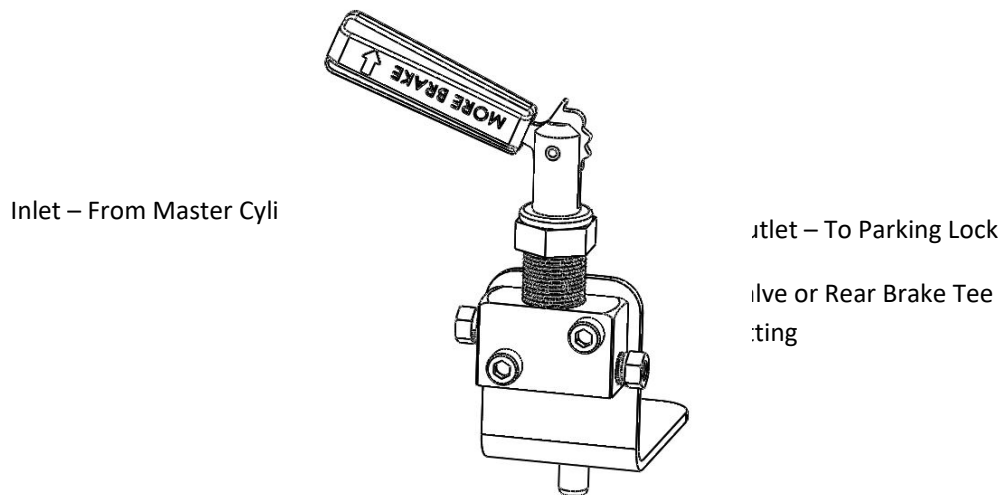
3. The hardline termination flare type requires is ISO BUBBLE FLARE. Ensure you have a tool ready that can create this type of flare.



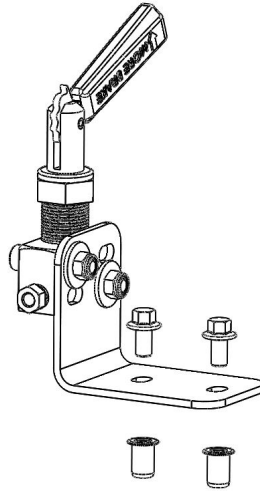
4. Fasten the Prop valve to the mounting bracket as shown below (RHD orientation shown, mount the bracket to the opposite face for LHD).



5. The hardline plumbing should be as shown below:



6. Use a paint pen or other marker to mark the mounting holes onto your desired mounting location.
7. Drill a diameter 10mm hole through your tunnel or other sheetmetal (taking care not to damage any existing wiring or fuel lines)
8. Install the supplied m6 Nutserts
9. Mount the Proportioning Valve assembly using the flange head M6 bolts.
10. Create or modify 3/16" hard lines to suit.



11. Detail information on the operation of the Tilton Proportioning valve can be found in the document 98-1261-Brake-Proportioning-Valve_.pdf available to download from the Tilton website.

https://tiltonracing.com/wp-content/uploads/98-1261-Brake-Proportioning-Valve_.pdf

If you have any questions don't hesitate to email us at sales@honeddevelopments.com