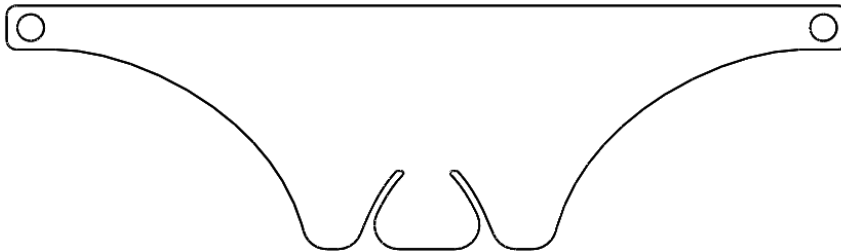
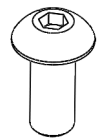


No.	Description	Quantity
1	HDP16-01-03 HEAT SHIELDS	2
2	M5 Button Head Cap Screw	2
3	M5 Flat Washer	2
4	M5 Nyloc Nut	2



1



2

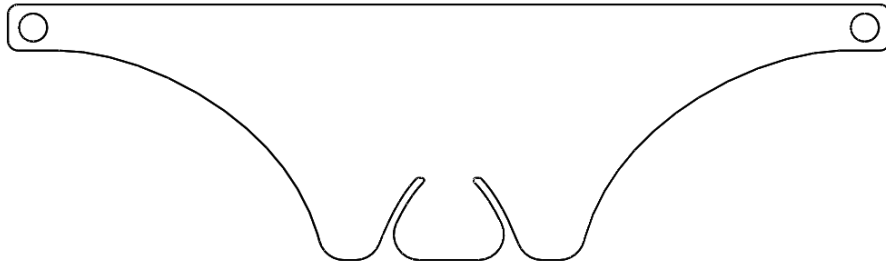


3

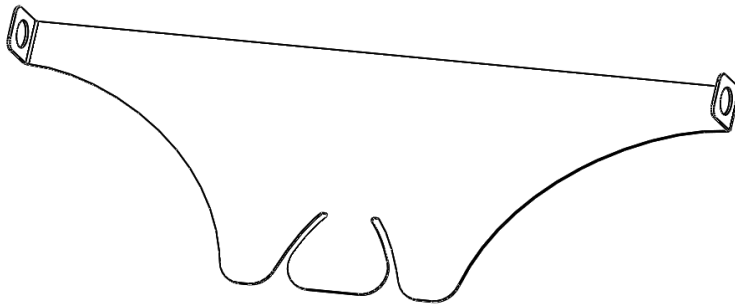


4

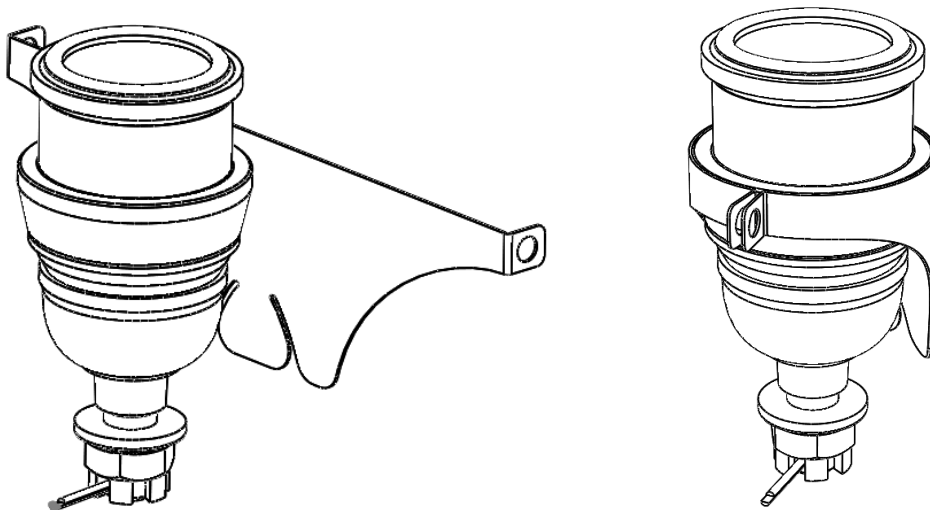
1. Using a ball point pen, mark the bend lines on the flat heat shield as shown below



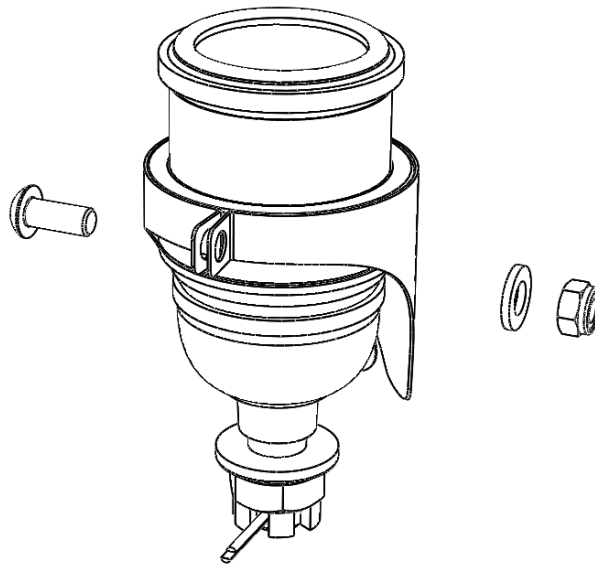
2. Bend each end of the heat shield up 90 deg as shown below



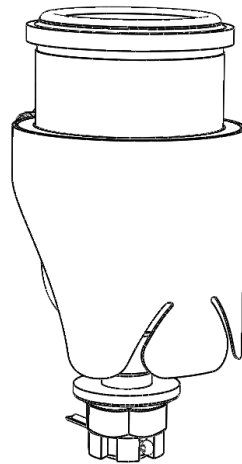
3. With the tabs facing outward, bend the heat shield around the gold collar of your ball joints



4. Install the M5 button head cap screw with washer and nyloc nut as shown.

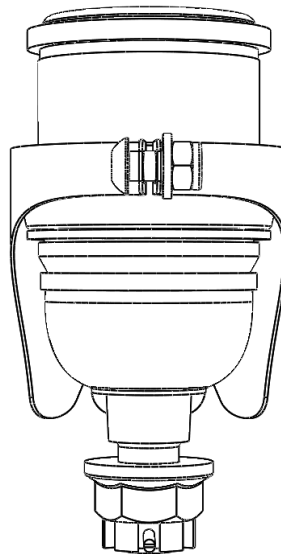


5.



this section inward  
ate clearance to the

6. When installed, turn steering wheel lock to lock and check that the edges of the heat shield indicated below don't contact the lower control arm. If they do, loosen the clamp bolt and rotate as necessary.





If you have any questions don't hesitate to email us at [sales@honeddevelopments.com](mailto:sales@honeddevelopments.com)