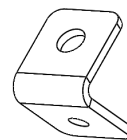


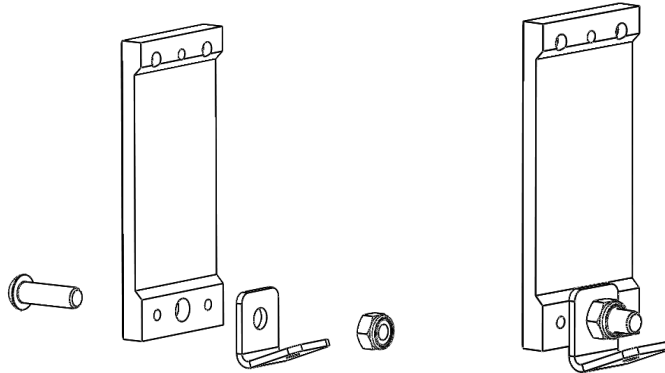
No.	Description	Quantity
1	Accelerator Pedal	1
2	Accelerator Pedal Adapter	1
3	Accelerator Pedal Spacer	2
4	Clutch Pedal	1
5	Brake Pedal	1
6	Self Drilling Screws	6
7	M6 x 16 Button Head Cap Screw	1
8	M6 Nyloc Nut	1
9	M4 x 8 Button Head Cap Screw	3
10	M4 x 12 Button Head Cap Screw	3
11	M4 x 16 Button Head Cap Screw	3
12	Accelerator Pedal Adapter Bracket	1



Recommended Tools and Consumables:

- Electric drill
- Phillips head driver bit
- Allen Key set
- 10mm Spanner
- Ruler
- Black RTV Sealant (optional)
- Electrical/Masking Tape
- Red/white paint pen
- 2.5mm (3/32") Drill Bit
- Safety Glasses (eye protection)

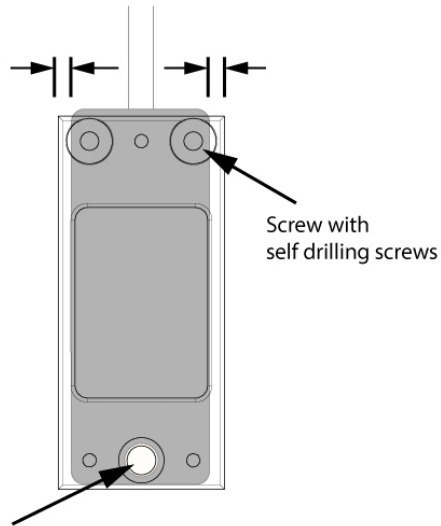
1. Remove driver's seat to gain working space.
2. Remove factory accelerator pedal cover by peeling off from the bottom edge, needle nose pliers and a screw driver can help with this.
3. Straighten pedal if bent during step 1.
4. Attach the sheet metal Accelerator Pedal Adaptor Bracket to the Accelerator Pedal Spacer with the M6x16 button head cap screw. Align perpendicular to the edge of Accelerator Pedal Spacer before tightening fastener.



5. Clip the Accelerator Pedal Spacer onto the factory accelerator pedal as shown

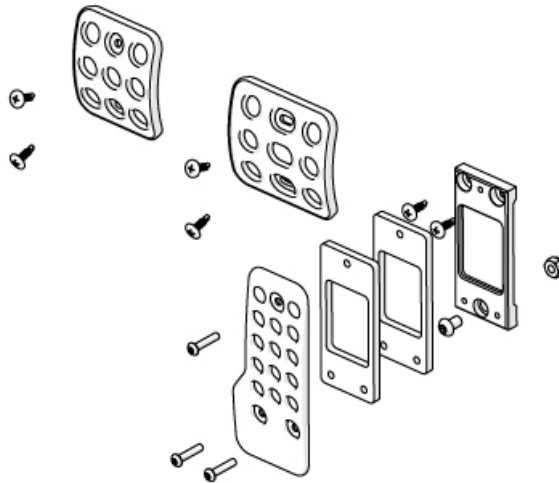


6. Clamp the Accelerator Pedal Spacer against the factory pedal until the top edge touches the pedal. Be sure to align the pedal spacer parallel to the sides of the original pedal.

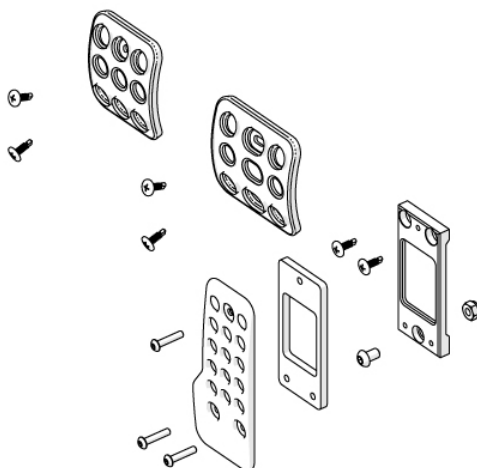


Attach Accelerator Pedal Adapter to OE pedal with M6 button head and nyloc nut through this hole

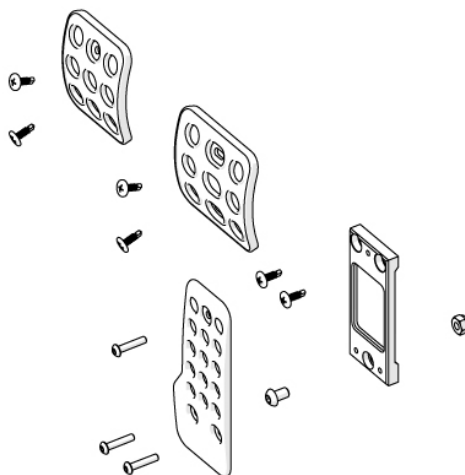
7. Take two Self Drilling Screws and fasten Accelerator Pedal Spacer through upper holes (counter bored holes) to the factory pedal.
8. Decide on what thickness pedal spacer you wish to use, two spacers (10mm), one spacer (5mm) or no spacer.
9. If two spacers, use the m4x16 button head screws and, in the following order, Accelerator Pedal – Accelerator Pedal Spacer 1 – Accelerator Pedal Spacer 2, fasten the Accelerator Pedal to the Accelerator Pedal Adapter



10. If one spacers, use the m4x12 button head screws and, in the following order, Accelerator Pedal – Accelerator Pedal Spacer 1, fasten the Accelerator Pedal to the Accelerator Pedal Adapter

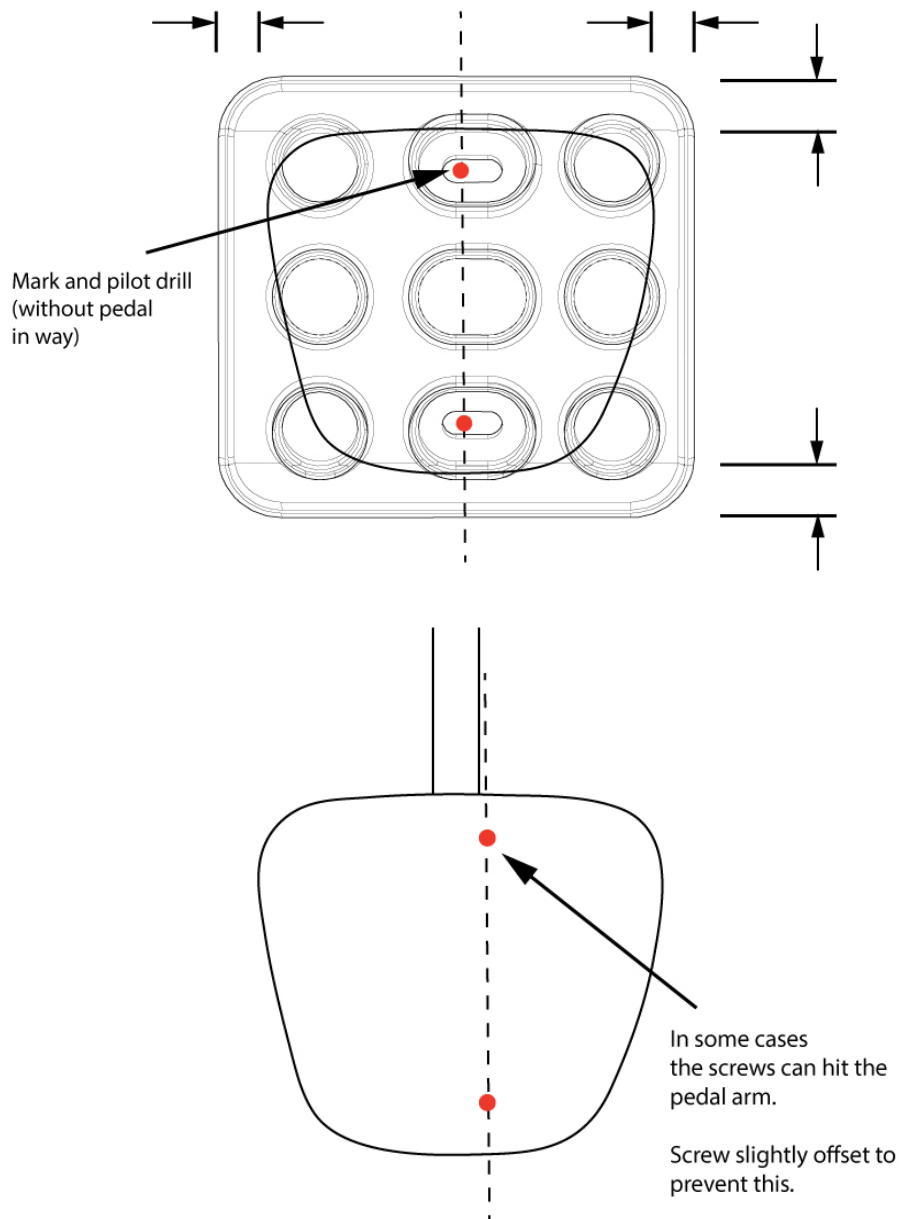


11. If no spacers, use the m4x8 button head screws and fasten the Accelerator Pedal to the Accelerator Pedal Adapter



12. Check that the new accelerator pedal assembly does not interfere with any floor mats you may have.
13. Check that you can achieve full stroke with the accelerator pedal (fully open TB).
14. Peel off the brake and clutch pedal rubber covers.

15. Using a cable tie or tape, temporarily mount the Brake Pedal to the factory brake pedal. Centralize the pedal left to right and up and down.



16. Using two Self Drilling Screws, screw the Brake Pedal to the factory brake pedal. Aim to get the screws centred in the factory pedal. One tip is to start with the lower screw, then realign the Pedal with the lower screw holding the pedal steady, then drill the upper screw. When drilling take care not to drill into your hand, secure pedal with piece of wood behind it if needed.
17. Using a cable tie or tape, temporarily mount the Clutch Pedal to the factory Clutch pedal. Centralize the pedal left to right and up and down.
18. Using two Self Drilling Screws, screw the Clutch Pedal to the factory Clutch pedal.
19. Test the feel of the pedals by driving the car.
20. Experiment with the Brake Pedal position, to adjust, use a hand screw driver to loosen the self drilling screws (turn counter clockwise) slide the pedal in its adjustment slot and test. Repeat until satisfied with the Brake Pedal position. Pedal can be flipped 180 deg to change direction of adjustment if required.
21. Experiment with the Accelerator Pedal offset, two spacers, one spacer, no spacers to find your preference.
22. Once satisfied with the Pedal Set configuration use black RTV to fill the counter bores where the fastening screws can be seen. Smooth the RTV with wetted rubber glove finger or similar technique. Allow to dry ~24 hours before driving.