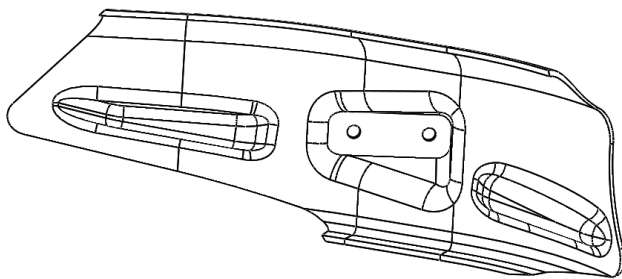
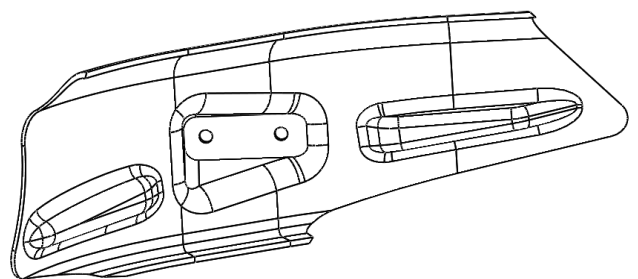


LHS SHOWN

No.	Description	Quantity
1	LHS Duct	2
2	RHS Duct	2
3	LHS Sticker	2
4	RHS Sticker	2
5	RHS Bracket	2
6	LHS Bracket	2
7	Clamp Plate	2
8	M6 x 16 Hex Head Bolt	4
9	M6 Nyloc Nut	8
10	M6 Washer	16
11	M6 x 70 Hex Head Bolt	4



1



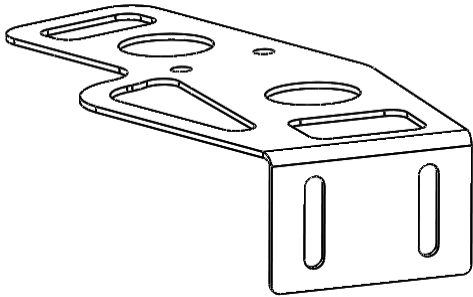
2



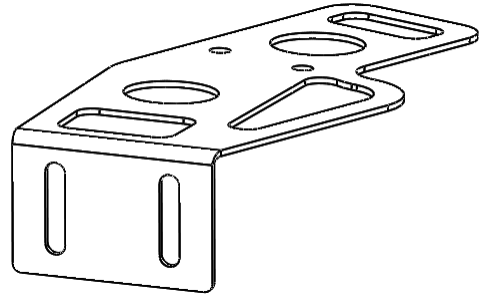
3



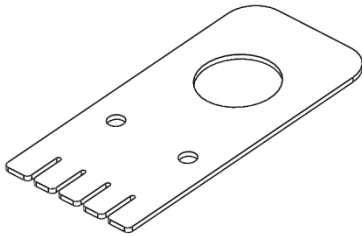
4



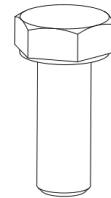
5



6



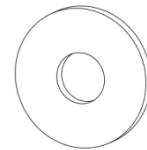
7



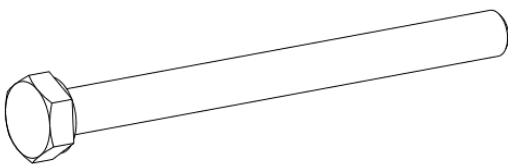
8



9



10



11

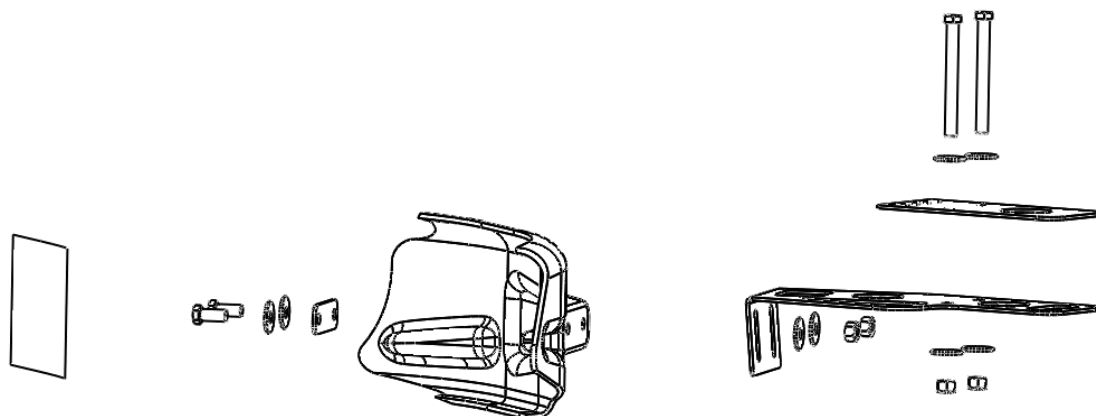
Air Guide Installation Instructions - HDP5-01 - EG Civic and DC2 Integra

1. Jack up car and place on jack stands
2. Remove plastic engine underbody cover, trim as required, and then re-fit.
3. Assemble air guide mounting bracket to lower control arm on either side of the vehicle using supplied M6x50mm bolts, with nylock nuts and washers on both sides. The clamp plate goes on top of the control arm, the mounting plate on the bottom, with the 2 M6 bolts passing through the hole in the control arm.
4. Fit air guide to air guide mounting plate with supplied clamp plate, M6x16mm bolts and nyloc nuts
5. Adjust angle of air guide such that mounting face of air guide is perpendicular to vehicle centreline, and such that air guide is protruding into the free stream below the vehicle with sufficient ground clearance. **The recommended height for the air guide is 70-80mm above ground at its lowest point.**
6. Check that air guide is not fouling any suspension parts by turning the steering from lock to lock
7. Tighten all hardware and fit supplied Honed decal over the 2 bolt mounting area on the guide
8. Once the air guide is in final position, using a soft faced or dead blow mallet hammer down on the 5 cut out fingers on the front edge of the clamp plate, shaping them around the front edge of the lower control arm. This is to help retain the clamp plate and bracket in the event the air guide is impacted.
9. Lower car off jack stands

Note that these components are intended for race use only, and will require regular inspection and maintenance if necessary. Honed takes no responsibility for injury or financial loss as a result of use or misuse of these

Reference Images

1. Exploded View LHS



2. Bracket mounted on EG/DC2 control arm



3. Clamp Plate

