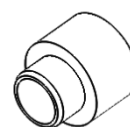
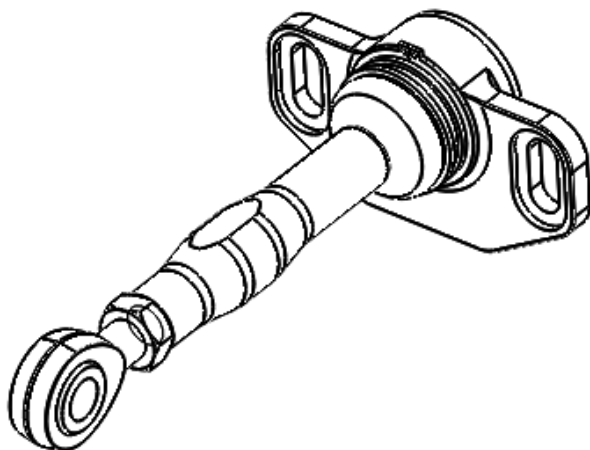


No.	Description	Quantity
1	Upper control arm	2
2	Rod end spacer	4
3	Mounting plate A – Centre	4
4	Mounting plate B – Offset	4



2



3



4

1. Raise the rear of the vehicle, and support on jack stands. Remove the rear wheels.
2. Remove the rear upper control arms by loosening then removing the 2 inboard bolts and the single outer bolt using a 14mm socket.
3. Assemble each of the Honed upper control arms (1), with the two outboard rod end spacers (2) and set the desired approximate length. Fit the appropriate mounting plate to the recess in the black inner ball joint mounting block to give the desired handling behaviour, either (3) or (4). Refer to the setup tables below for the correct settings. The length may be easily adjusted when performing the wheel
4. Install the upper control arm, with the two outboard spacers in place. Reinstall the 2 inner bolts and single outer bolt fixing the control arm to the trailing arm.
5. Torque the 2 inner bolts to 39Nm (29lbft) and the outer bolt to 55Nm (40 ftlb). Tighten the jam nut on the rod end to 25Nm (18lbft)
6. Check that there is no fouling or binding of the suspension at full bump or droop by cycling the suspension upward and downward with a jack placed beneath the hub. An effective bump stop and droop limit must be in place to prevent over travel of the inner pivot of the control arm. After installation a wheel alignment must be performed.

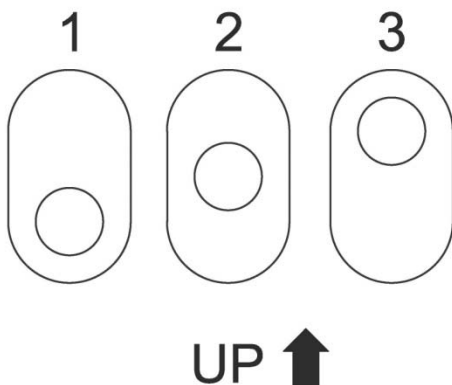
Suspension configuration	Mounting plate	Position
OEM geometry <sup>1</sup>	B - Offset	3
Honed rear roll centre bracket <sup>1</sup>	A - Centre	2

**Note 1:** Only position 3 with the inner upper control arm pivot mounted in the lowest location should be used with OEM suspension geometry.

Desired camber setting	Approximate length X
+1°	180 mm
OEM	175 mm
-1°	170 mm

**Note:** These components are intended for race use only, and will require regular inspection and maintenance. Honed will not be held responsible for any misuse of the components.

Mounting plate orientations – Viewed from outboard side toward centre of car



Camber adjustment:

