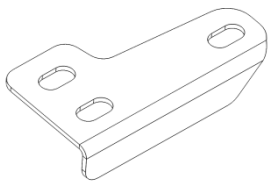
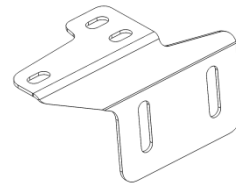


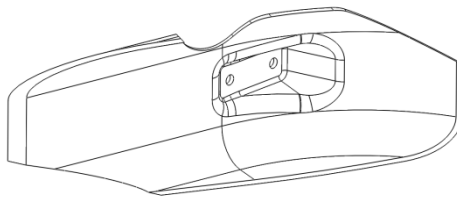
No.	Description	Quantity
1	Clamp plate	1L 1R
2	Mounting bracket	1L 1R
3	Air guide	1L 1R
4	M6 x 25mm bolt	6
5	M6 x 16mm bolt	4
6	M6 washer	20
7	M6 nylock nut	10
-	Honed decal	2



1



2



3



4



5



6



7

1. Jack up car and place on jack stands
2. Assemble air guide clamp plate (1) and mounting bracket (2) to the radius rod, using 3 M6 x 25mm bolts (4) with washers (6) and nylock nuts (7). The clamp plate is placed on the top face of the radius rod, with the mounting plate on the lower side.
3. Fit air guide (3) to air guide bracket with supplied M6x16mm bolts (5), washers both sides (6) and nylock nuts (7). Tighten bolts until just snug but still allowing the air guide to be adjusted.
4. Adjust angle of air guide (3) such that mounting face of air guide is perpendicular to vehicle centre-line, and such that air guide is protruding into the free stream below the vehicle with sufficient ground clearance. The rear face of the air guide should be 2-3mm from the end of the lower shock bolt to allow maximum clearance to the rim. The clamp plate should be approximately 20mm forward of the head of the OEM radius rod to lower control arm mounting bolt when viewed from above.
5. Cycle the steering from full lock left to full lock right and check clearance between the wheel and air guide. Adjust if necessary.
6. Lower car from jack stands and check ground clearance to lowest point of air guide. Recommended clearance is 70-80mm. Adjust air guide to correct position, and then place vehicle back up on jack stands.
7. Tighten all hardware to 4Nm and then fit 2 x Honed stickers to over mounting area of brake air guide
8. Lower car off jack stands

#### Example images

